

The Carriageworks, Stokes Croft, Bristol.

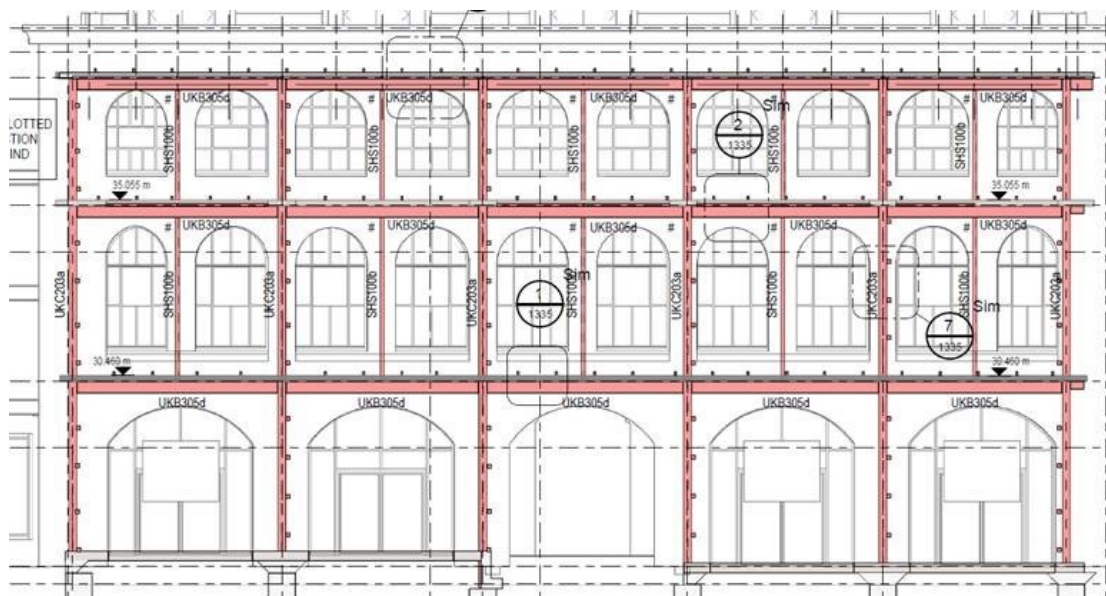
They were built in 1862 by Edward William Godwin from Pennant stone with Bath stone dressings. It has round arched arcades above double width segmental arches. The ground-floor arches were originally open for access by John Perry and Sons' carriages. The façade required attaching to the new structural steelwork of the redeveloped site and is a listed structure as being a fine example of Byzantine Revival architecture.



The building had remained in a very poor neglected and derelict condition for over 35 years and during the past few years a design scaffolding had to be erected to provide support to the listed facade as some buildings behind were becoming dangerous.

The Consulting Engineers on this project are Craddys, Pill, Bristol who specified the Cintec anchor system for use to attach internally to the new steel frame structure, with the steelwork being supplied and erected by Cauntton Engineering, Limited, Nottingham.

Cintec Installer, Falcon Structural Repairs Limited, were appointed on this project by the developer The PG Group Bristol, to carry out the core drilling and anchor installation.



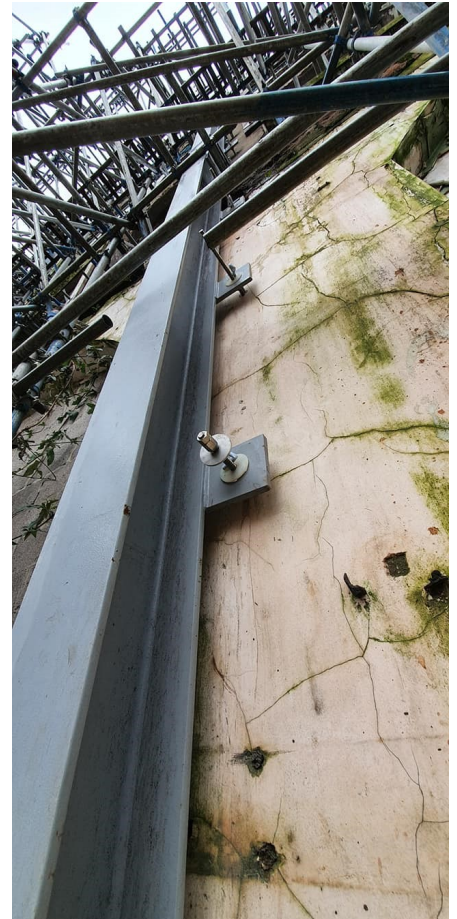
The new steel frame was attached to the façade with anchors being spaced at approximately 1 metre centres either horizontally or vertically.

The Carriageworks, Stokes Croft, Bristol.

Working closely with the PG Site Team and Craddys structural engineers, Falcon installed the stainless steel Cintec Gripbar anchors into the masonry facade. The M16 x1000mm long Cintec Gripbar anchors were diamond cored and embedded into the inner face of the masonry facade for a 600mm depth.

Each steel column was fixed back to the facade with 12 number Cintec anchors equally spaced and a similar fixing strategy was also proposed for the steel floor beams.

Falcon's operative's have regular H&S and powered access training and possess IPAF Licences, allowing them to operate the mobile elevating work platforms, as shown in some of the photos below and demonstrates the constraints that Falcon's team had to work under.



Above: Artists impression of the completed façade and adjoining new build development restoring beauty to a neglected area and bringing new life to this part of the city.



Above: every anchor was precisely positioned and set out to align exactly with the pre-drilled holes in the structural steelwork. All anchors were fitted with both a nylon and stainless steel washer, a load nut and locking nut.