

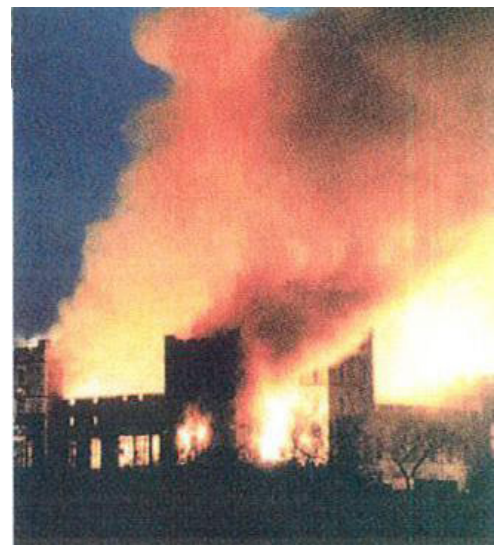
Windsor Castle - The Brunswick Tower



The 900 year old Windsor Castle is the home of her Majesty the Queen of England, and is the repository of the many of the Royal artifacts, including priceless art treasures. At 11.37 am Friday November the 20th, 1992, fire broke out, and much of the castle was devastated by the raging inferno that ensued. The fire raged all day and at 6:30 pm the Brunswick Tower was engulfed. The intense heat caused the castellated section of the tower to fracture, with the possible risk of collapse.

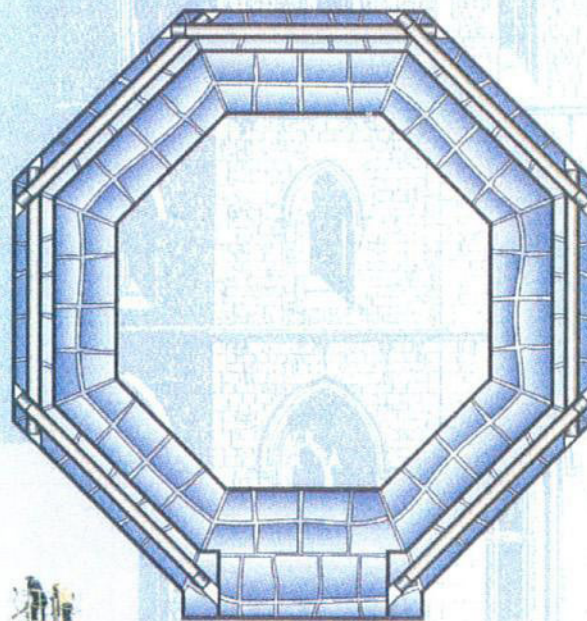
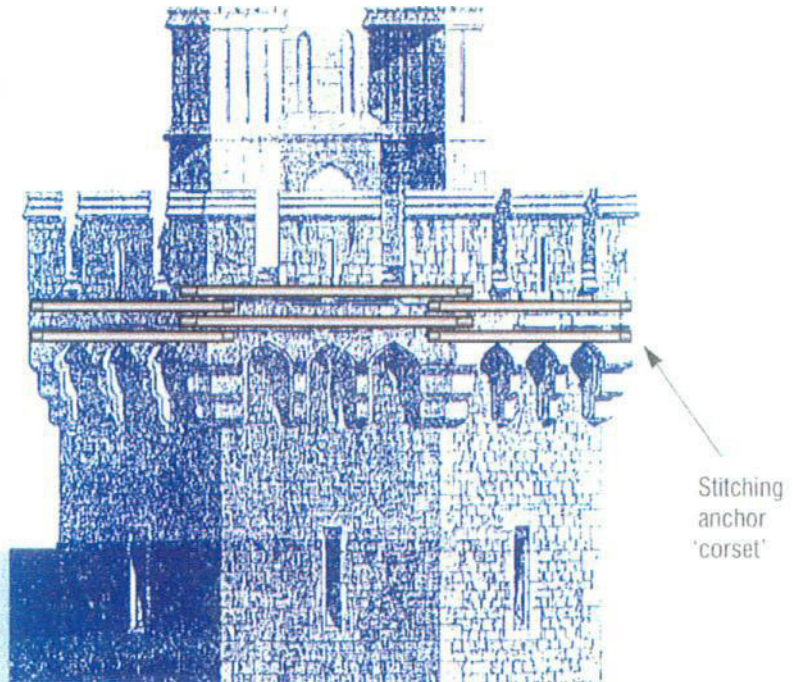
Initially there seemed little choice but to dismantle and rebuild the top section of the tower. However the versatility of the Cintec Anchoring and Reinforcement System enabled the Engineers to design a repair solution that restored the structural integrity without further disruption to the unstable stonework.

Throughout the damaged areas of the castle Cintec Anchors and reinforcement system were used to restore the integrity of the walls and provide repair and strengthening solutions to this magnificent Heritage Building.



Windsor Castle - The Brunswick Tower

The latest Diamond Drilling Techniques were used to create a network of holes within the stonework. The Cintec Anchors and reinforcement system were then installed creating a reinforcing ring, within the fabric of the stonework, maintaining the original appearance of the tower.



The illustration shows the arrangement of anchors used in the restoration of the Brunswick Tower.