

Port Baku Towers 2

Chimney Stabilisation



Azerbaijan



Cintec International Limited

Port Baku 2 Chimney Restoration Azerbaijan

Project:
Seismic strengthening
and repair of the
cracked
Chimney

Engineers
Ramboll UK Ltd.

Main Contractor:
Pasha Construction

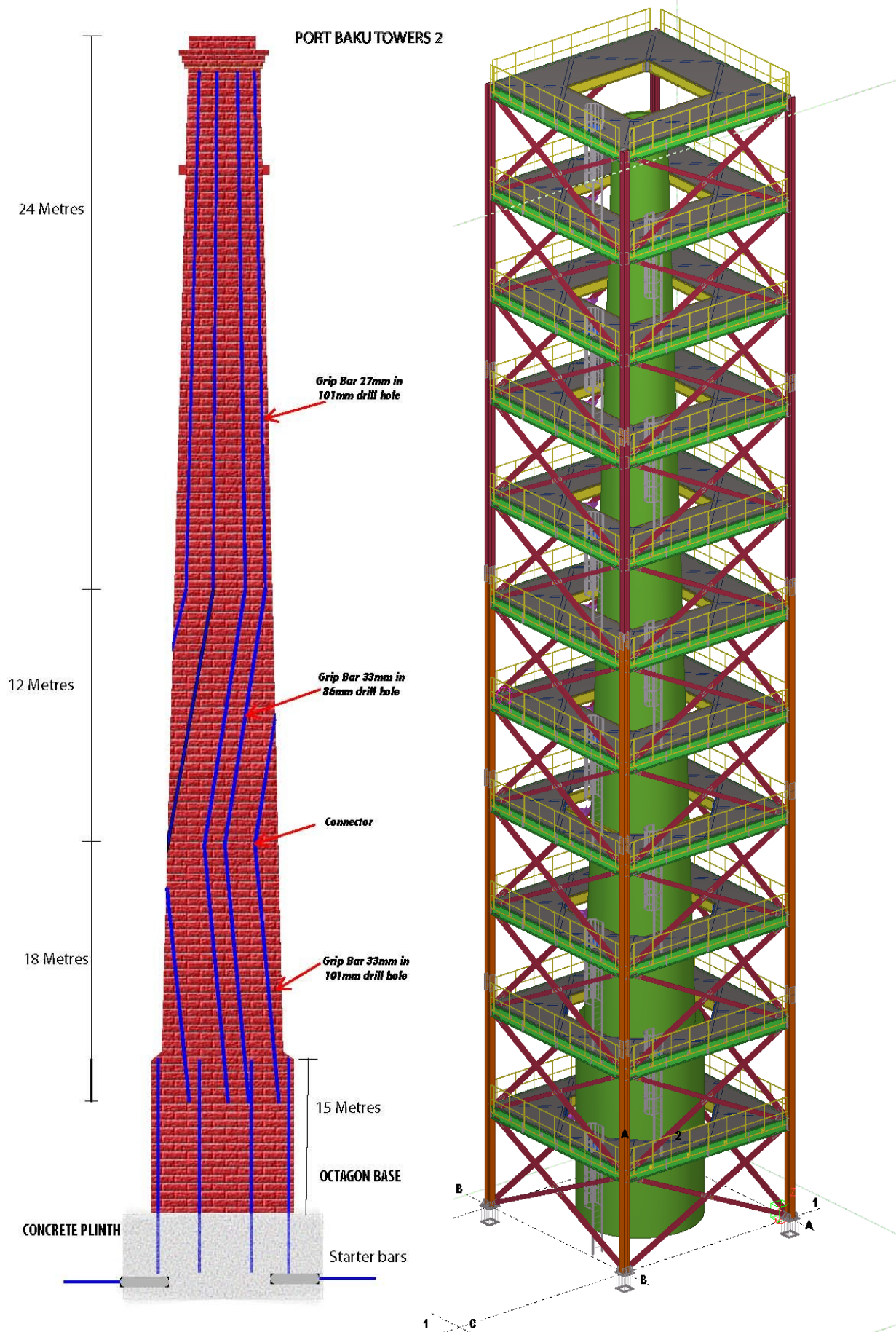
*Drilling & Installation
Contractors:*
Cintec International
Limited

Cintec Project Manager:
Dennis Lee

Cintec Supervisor:
Allan Buckley



Anchor layout and the temporary tower scaffold which, as well as for access was designed to hold the chimney in the event of a seismic event.



The top level of the chimney needed to be restored to create a flat surface for the drilling rigs and support frame.



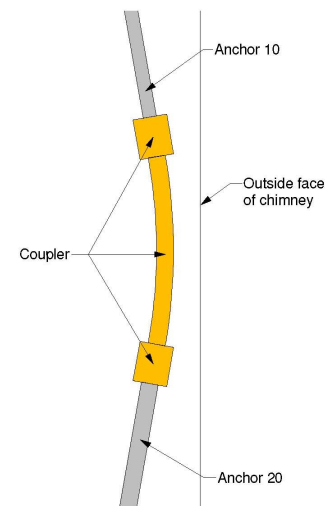


The top opening of the chimney was covered with a steel formwork which the rigs were attached to then covered in plywood. The steel formwork was lifted and rotated to the next hole positions until all eight anchors had been drilled and installed.

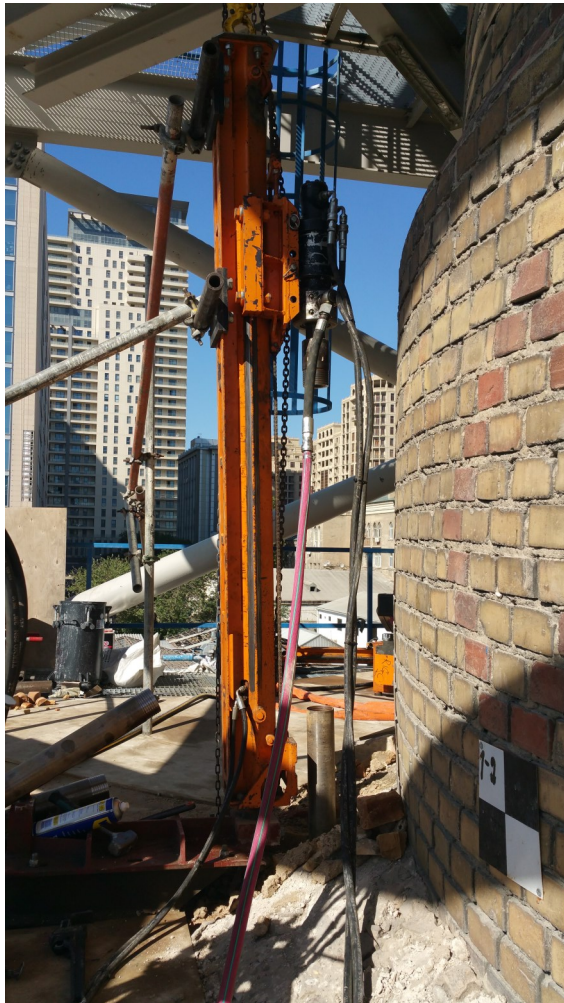


Vertical 24mt holes 101 mm diameter were drilled, angled to suit the outside taper of the chimney

The 18mt and 12mt vertically inclined anchors were connected with a cranked section to create a continuous anchor.

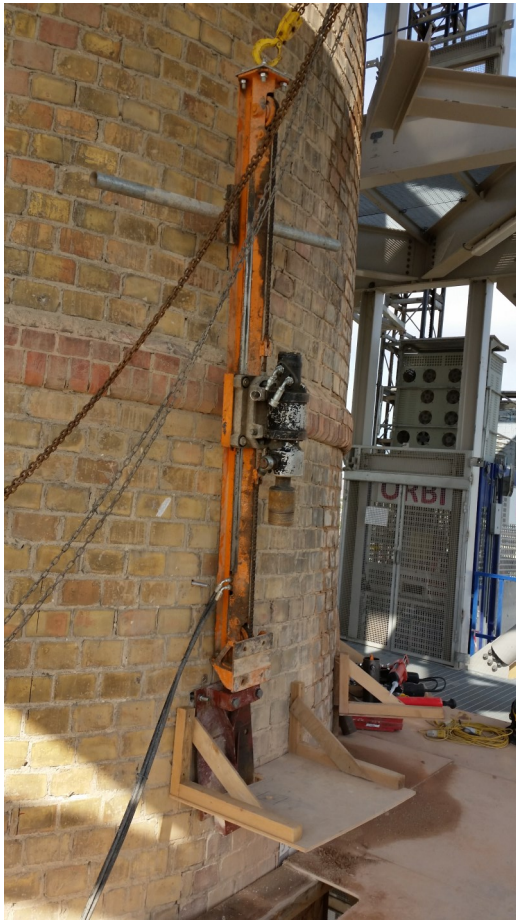


DETAIL 1
SECTION THROUGH
ANCHOR 20 & 10 COUPLER
(1:10)



Lower 15mt long Grip Bar 33mm anchors installed in the Octagon base finishing in the brickwork foundation below ground level.





Precise set up of drilling rig on side of chimney was required. Using digital levels.

Lasers within the barrel ensured an accurate entry point for the drill.





6mt long 25mm starter bars were installed in the brickwork footings. 3mts drilled into the chimney base and 3mt bare bar to cast into the new concrete plinth below ground level.





All cracks were stitched horizontally with M16 stud anchors in 40mm holes.



Artists Impression of the finished development with the restored and strengthened chimney at its centre.



Cintec International Limited

United States

**Cintec America Inc.
200 International Circle, Suite 5100,
Hunt Valley, Maryland
21030, USA**

Tel: 1 410 761-0765

1 800 363-6066

Fax: 1 800 461-1862

E-mail: solutions@cintec.com

Canada

**Cintec Reinforcement Systems
38 Auriga Drive, Suite 200
Nepean, Ontario, Canada
K2E 8A5**

Tel: (1) 613 225-3381

Fax: (1) 613 224-9042

E-mail: solutions@cintec.com

United Kingdom

Cintec International Ltd.

Cintec House

11 Gold Tops

South Wales, UK

Newport NP204PH

Tel: +44 (0) 1633 246614

Fax: +44 (0) 1633 246110

E-mail: hqcintec@cintec.co.uk

**Visit our website for up-to-date
information and test data
together with information on
the various projects carried out
worldwide.**

www.cintec.com