

1. Refer to project Testing Specification and source documents referred to therein (e.g. BS EN 1317; BS6779, etc.).
2. Vehicle Specification - Rigid HGV with GVM of 10,000 kg
3. Impact height 600mm above road/footpath.
4. Impact Load 1 - 20° angle at 40 mph.
5. Impact Load 2 - Perpendicular at 10mph.

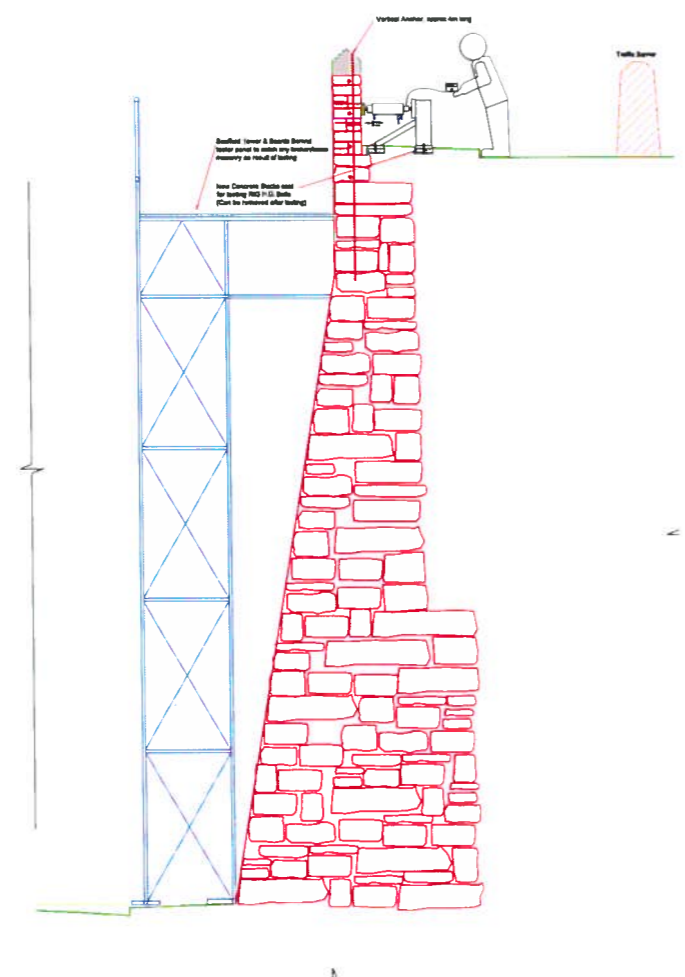
Potential/Proposed Testing Location

CHOSEN, EXPERIMENT LOCATION.
(FIGS. 14-19.)

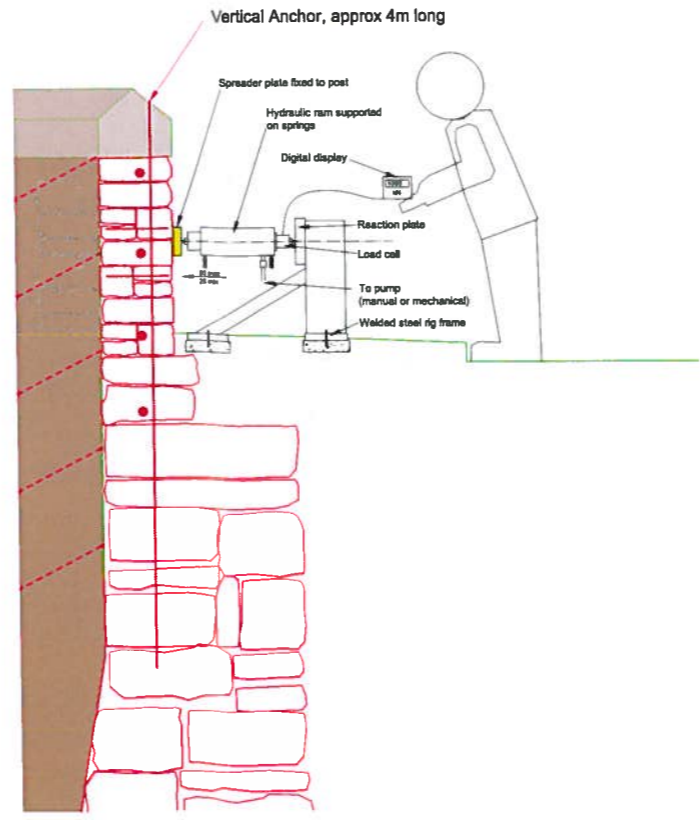
Plan
Scale 1:500



Wall Elevation (Projected)
Scale N.T.S.



TYPICAL TESTING SET UP
Scale 1:50



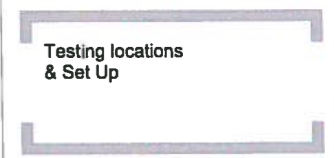
TESTING RIG
Scale 1:20

P01	21/02/12	MH	SH	SH
Issued for Feasibility Study				
Issue	Date	By	Chkd	Appd

ARUP

Client
States of Jersey
Transport and Technical Services
Engineering Department

Job Title
Parapet Strengthening
to Containment Standard



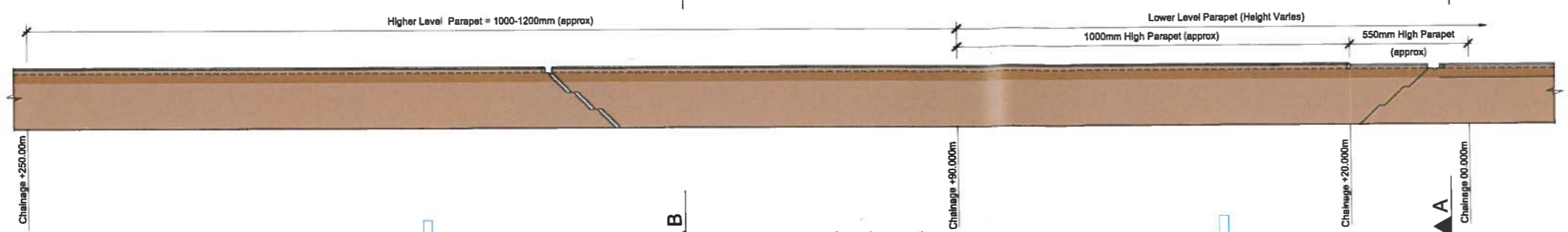
Scale at A1

Discipline Structural

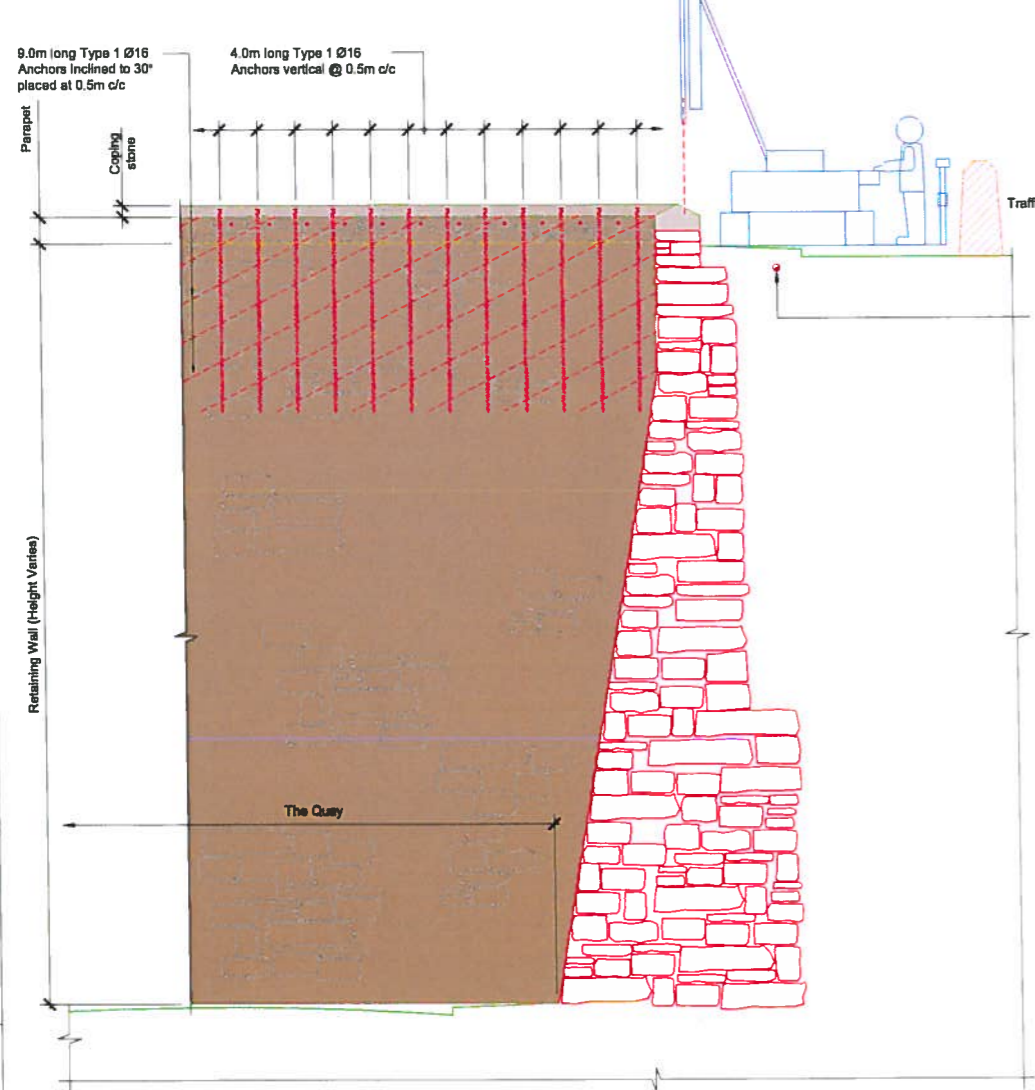
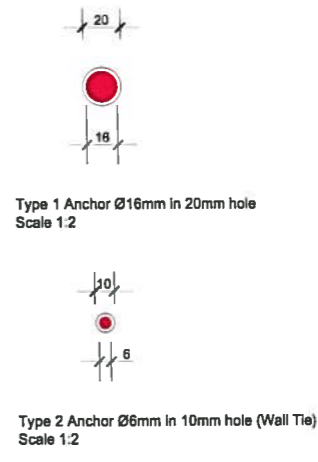
Job No	Drawing Status
219921	Feasibility Study
Drawing No	Issue
ARP-S-PWR-003	P01



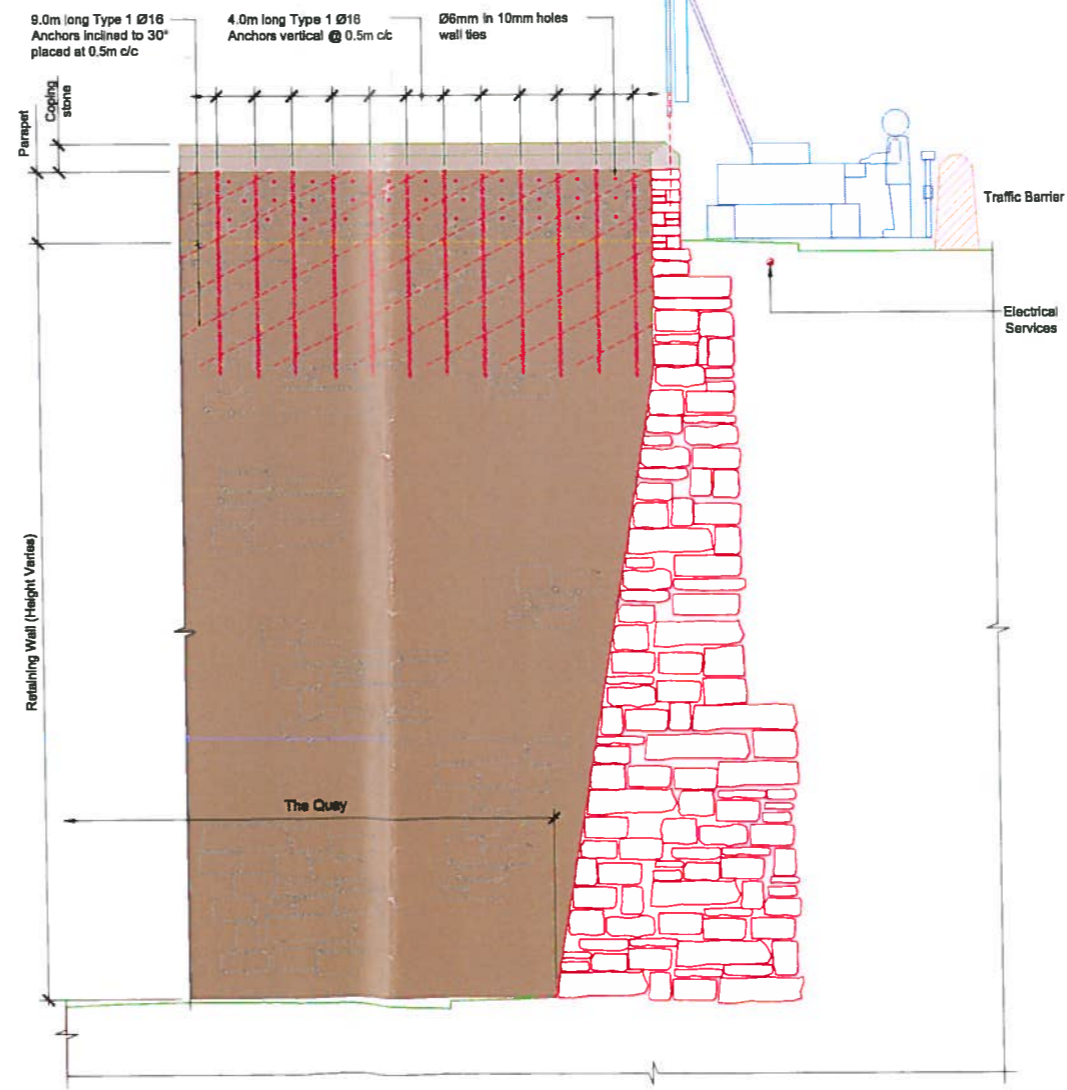
Plan
Scale 1:500



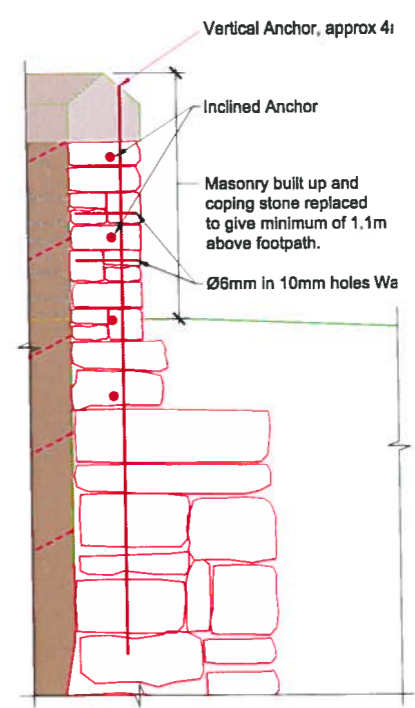
Wall Elevation (Projected)
Scale N.T.S.



EXISTING SECTION A-A
Scale 1:50



EXISTING SECTION B-B
Scale 1:50



TYPICAL SECTION OPTION 2
Scale 1:20

- Notes:
1. Coping can be removed for main drilling exercise & coping hole drilled separately.
 2. Masonry must be built up prior to drilling.

P01	21/02/12	MH	SH	SH
Issued for Feasibility Study				
Issue	Date	By	Chkd	Appd

ARUP

Client
States of Jersey
Transport and Technical Services
Engineering Department

Job Title
Parapet Strengthening
to Containment Standard

Proposed Option 2
Parapet Strengthening
Anchors

Scale of A1	
Discipline	Structural
Job No	Drawing Status
219921	Feasibility Study
Drawing No	Issue
ARP-S-PWR-003	P01

Pier Road



Fig 1. View of Pier Road parapet



Fig 2. CH. 0+00

Pier Road



Fig 3 CH. 0+00



Fig 4. View looking up

Pier Road



Fig 5 View looking up



Fig 6. Staircase

Pier Road

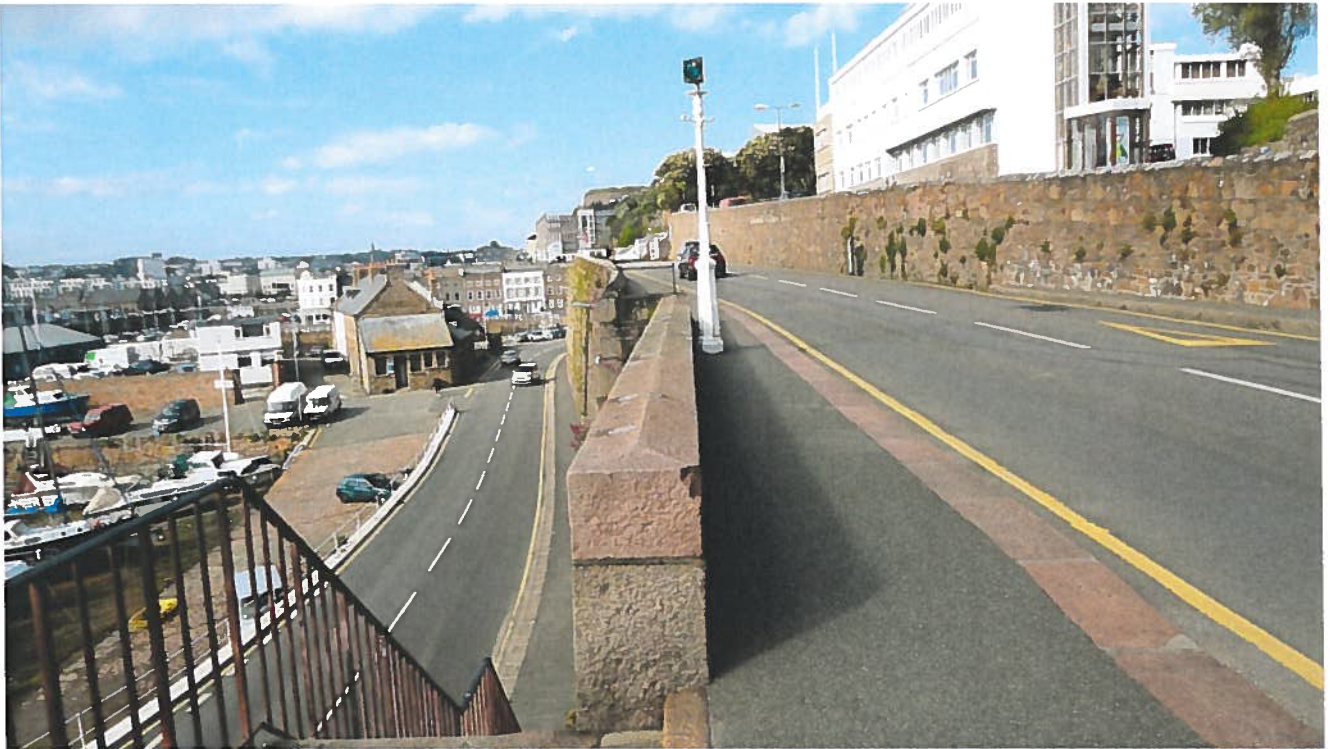


Fig 7 Return



Fig 8 . Drop

Pier Road



Fig 9 Low wall rail



Fig 10 Looking up

Pier Road

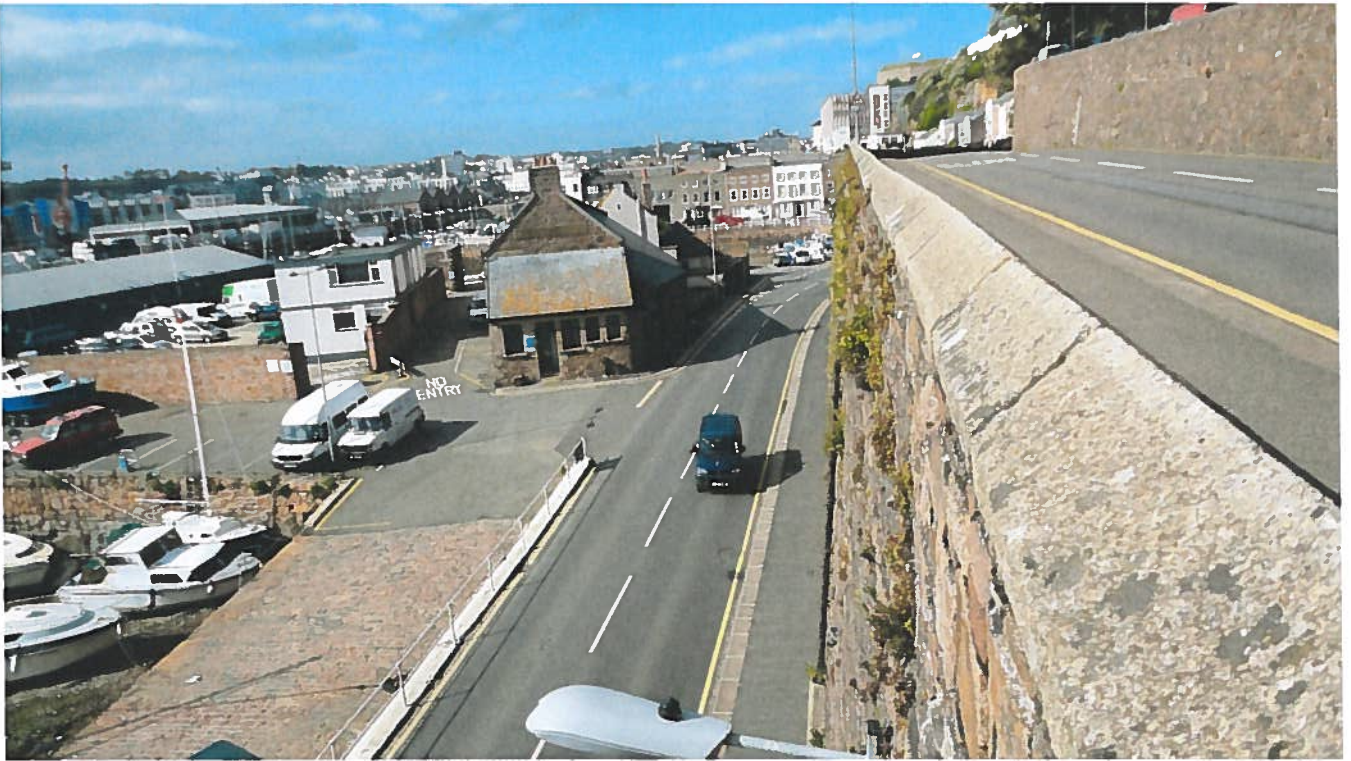


Fig 11 Large drop



Fig 12 Thinner wall

Pier Road



Fig 13



Fig 14

Pier Road



Fig 15



Fig 16

Pier Road



Fig 17



Fig 18

Pier Road



Fig 19

1. Contract Sum Analysis

1.1. Drawings Received

- Parapet Strengthening to Containment Standard – Proposed Option 2 Paratec Strengthening Anchor – Job No. 219921 - Drawing No. ARP-S-PWR-003 – Issue P01
- Parapet Strengthening to Containment Standard – Testing Locations and Setup– Job No. 219921 - Drawing No. ARP-S-PWR-003 – Issue P01

1.2. Bill of Quantities

Our bill of quantities can be found below:

Item Number	Description	Rate	Quantity	Unit	Total
1	Mobilisation, setup and Traffic Management	£5,721.08	1	Sum	£5,721.08
2	Supply and Installation of CINTEC anchors (11nr 200mm wall ties, 12nr 4m anchors, 11nr 9m anchors)	£38,243.53	1	Sum	£38,243.53
3	Static Load Test	£7,342.26	1	Sum	£7,342.26
4	Masonry works (Coping works/repointing)	£2,365.89	1	Sum	£2365.89
5	Additional CINTEC ties to fix coping stones	£65.00		Per anchor	
				TOTAL	£53,672.76